

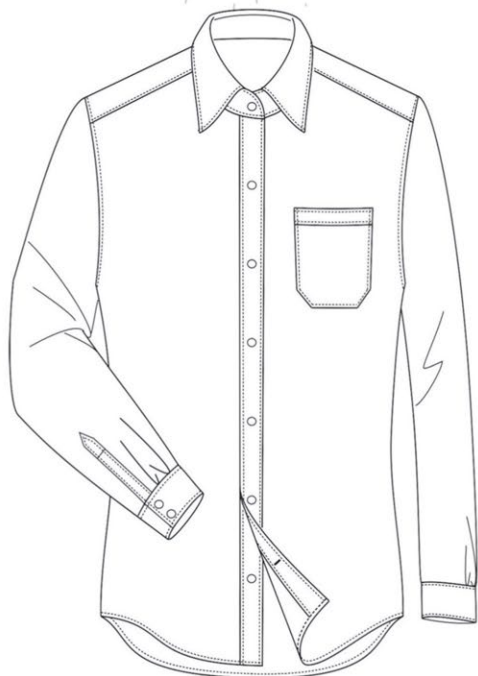


Рубашка: элементы стиля

Задизайнено
«КЕ Студия стиля»
2023



CONTENTS



01	Sleeve
01	Shoulder epaulet
02	Front style
03	Back style
04	Collar band
05	Collar style
06	Collar stay
08	Cuff style
09	Long sleeve shirt
10	Short sleeve shirt
12	Pocket style
15	Bottom&Gusset
16	Contrast position
17	Cut design
18	Brand label
19	Buttonhole style
20	Pic stitch
22	Monogram

Sleeve



5000
Long sleeve shirt



5001
Short sleeve shirt

Shoulder epaulet



S002
Pointed



No

Front style

POPULAR & RECOMMEND



520Q
Left & right placket
front



520H
Pleats on placket
front

FULL OPTIONS



5101
Placket



5100
Plain front



5103
Hidden button
front



518B
Left & right plain
front

Back style

POPULAR & RECOMMEND



5145
Box pleats to
bottom



5141
Side pleats



5143
Box pleats

FULL OPTIONS



5140
no pleat and
no dart



5142
Inverted box
pleat



5144
no pleat with
double darts



5146
Box pleats to bottom
w/two darts

Yoke style



5170
Normal yoke



5149
Triangle yoke



5171
Split yoke

Collar band



5270
Round collar band
w/one button



5271
Round collar band
w/two buttons



5273
Round collar band
w/three buttons



5274
Squared collar band
w/one button



5275
Squared collar band
w/two buttons



5276
Squared collar band
w/three buttons

Collar style

POPULAR & RECOMMEND



5220
Middle cut away
collar



5203
Middle pointed
collar



5L47
C style

FULL OPTIONS



5201
Long pointed
collar



5202
Short pointed
collar



5210
Middle squared
collar



5211
Large squared
collar



5221
Large cut away
collar



5230
Middle arch collar



5231
Large arch collar



5250
Band collar



5240
Small round
point collar



5241
Big round point
collar



5L48
E style

Collar stay



5282
No



5280
Fixed



5281
Movable



5290
Collar point
w/button



5291
Collar point w/
hidden button

POPULAR & RECOMMEND



545H
Semicircle French
cuff four buttonholes



545B
Semicircle French cuff
two buttons & two
buttonholes



5414
Small rounded cuff
one button & one
buttonhole

FULL OPTIONS



5410
Rounded cuff one
button & one
buttonhole



5411
Rounded cuff two
buttons & one
buttonhole



5412
Rounded cuff two
buttons & two
buttonholes



5413
Rounded cuff three
buttons & three
buttonholes



5400
Square cuff one
button & one
buttonhole



5401
Square cuff two
buttons & one
buttonhole



5402
Square cuff two
buttons & two
buttonholes



5403
Square cuff three
buttons & three
buttonholes

Cuff style



Long sleeve shirt



5420

Large rounded cuff
one button&one
buttonhole



5421

Large rounded cuff
two buttons &one
buttonhole



5422

Large rounded cuff
two buttons &two
buttonholes



5423

Large rounded cuff
three buttons &three
buttonholes



5404

Square cuff one
button &two
buttonholes



5457

French cuff middle
double round four
buttonholes



5406

Single square French
cuff two buttonholes



545D

Square French cuff
four buttons
(Forward Link);



545W

French cuff with tab
two buttons & six
buttonholes



543A

French cuff with
tab one buttons &
three buttonholes



545Y

Square cuff w/tab
three buttonholes
one button



5455

Square French cuff
four buttonholes



545T

French three
rounded cuff



545G

Rounded French
cuff four buttonholes



5451

Rounded French
cuff four
buttonholes



5407

Single semicircle
French cuff four
buttonholes



5405

Square cuff one
button &two
buttonhole



5429

Convertible square
cuff



5415

Small rounded cuff
two buttons&two
buttonholes



5416

Small rounded cuff
three buttons&three
buttonholes



545N

2BUTTON+1CONV



545C

Single semicircle French
cuff two buttons & two
buttonholes



546Z

Semicircle French
cuff three buttons
&three buttonholes

Short sleeve shirt



FULL OPTIONS



54A0
Short sleeve Plain



54A1
Short sleeve Hem



54A2
Plain with slit



54A3
Hem with slit



54A5
Hem with slit &
one button



54A4
Short sleeve with
cuff

POSITION



5360
No



538B
Right



538A
Left

POPULAR & RECOMMEND



5329
Rounded pocket
with box pleat



5304
Square pocket
with loop



5311
Hexagon pocket
Decorate pleat



5321
Hidden pocket
double besom

Pocket style



538C
Left & Right



5300
Triangle pocket
Straight pleat



5301
Triangle pocket
Decorate pleat



5302
Triangle pocket
Triangle pleat

FULL OPTIONS



5323
Rounded pocket
Straight pleat



5324
Rounded pocket
Decorate pleat



5325
Rounded pocket
Triangle pleat



5326
Rounded pocket
Inverted box pleat



536F
Square pocket
Inverted box pleat



536G
Square pocket
with pen pocket



5320
Hidden pocket
besom



5319
Split square pocket



5328
Rounded pocket
with pen pocket

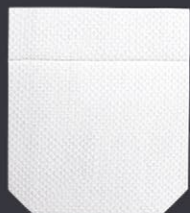


5306
Hexagon pocket
Straight pleat with box pleat

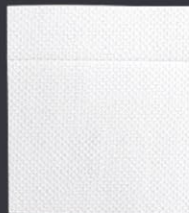
Pocket style



5310
Hexagon pocket
Triangle pleat



5312
Hexagon pocket
Straight pleat



5340
Square pocket
straight pleat



5344
Square pocket
Decorate pleat



5337
Rounded pocket
with pen pocket



536B
Rounded pocket with
eyeglass pocket

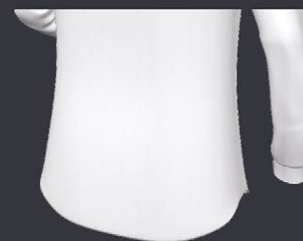


536H
Square pocket with
eyeglass pocket



536A
Inverted Pleat

Bottom&Gusset



5120
Normal rounded
bottom



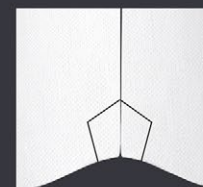
5132
Large rounded
bottom



5130
Normal square
bottom



5131
Straight side vents
bottom(9.0cm)



5135
Pentagon gusset



5133
Hexagon gusset



5134
Triangle gusset



5136
No

Contrast Position



5552
Upper collar



5532
Top inner collar



5549
Collar band



5533
Under collar leaf



5542
Right placket top



5634
Left placket inner



554D
Outer cuff



5534
Inner cuff

Cut design



Normal cut



549C
Collar with
slant cut



548E
Outside od collar band
diagonal cut



549A
Cuff with slant cut



549B
Cuff stripe vertical
cut



530P
Placket with slant cut



547K
Inner cuff diagonal
cut

Brand label



57D7
Inside yoke

57D9
Bottom of right
placket

57D6
NO

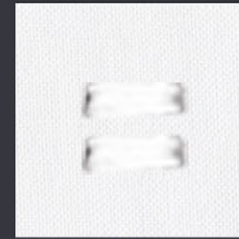
Fabric label



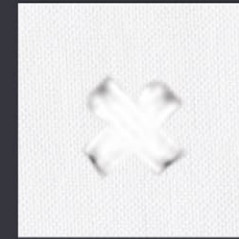
57P7
Bottom of right
placket

57P6
NO

Buttoning Style



57B2
"=" sewing button

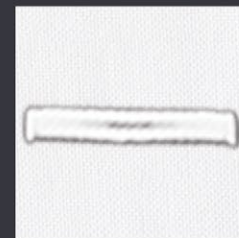


57B1
"+" sewing button



57A8
Claw sewing button
(handmade)

Buttonhole Style



S009
Horrorizontal



S010
Vertical



S011
45 angle buttonhole



S012
135 angle buttonhole

Pic stitch



FONT

ABC	<i>ABC</i>	ABC	ABC
562 Calligraphy	563 Times Roman	564 Block	565 Block

SIZE

<i>ABC</i>	<i>ABC</i>	<i>ABC</i>	<i>ABC</i>
2 6mm	3 7mm	4 8mm	5 9mm

POSITION



S007
0.6 pic stitch



S001
0.15 pic stitch



S003
Normal



553
Left cuff



556
Left chest

Monogram

ABC

566
Bradley



557
Inside neckband
center



555
Pocket center

РОССИЙСКАЯ ФЕДЕРАЦИЯ



СВИДЕТЕЛЬСТВО

на товарный знак (знак обслуживания)
№ 954181



Правообладатель: **Общество с ограниченной ответственностью «Квазиоптика»**, 141100, Московская область, г. Щелково, 1-й Советский пер. 25, офис 109 (RU)

Заявка № 2023706625

Приоритет товарного знака **01 февраля 2023 г.**
Зарегистрировано в Государственном реестре товарных знаков и знаков обслуживания Российской Федерации **07 июля 2023 г.**

Срок действия регистрации истекает **01 февраля 2033 г.**

Руководитель Федеральной службы
по интеллектуальной собственности



ДОКУМЕНТ ПОДПИСАН ЭЛЕКТРОННОЙ ПОДПИСЬЮ
Сертификат 429b6b0fe3853164ba796f83b73b4aa7
Владелец: **Зубов Юрий Сергеевич**
Действителен с 10.05.2023 по 02.08.2024

Ю.С. Зубов



